

# BALTIC IRON-HORSE XL



Automatic door

Automatic door

Automatic door

Automatic door

Indoor

Baltic Iron-Horse XL

**NFSI**   
**HIGH-TRACTION**

# BALTIC IRON-HORSE XL

## More pile for increased dirt and moisture trapping performance

With a higher pile than the classic Iron-Horse, this mat has an increased ability to trap dirt and moisture, delivering superior performance in areas of heavy traffic.

### Why Choose Iron-Horse XL?

- » Extra luxurious professional entrance mat
- » Superior dirt and moisture absorption
- » Fully serviceable product
- » Slip-resistant rubber backing
- » Light-fast and colour fade resistant
- » Suitable for underfloor heating
- » 5 years Manufacturers Guarantee\*
- » Made in Europe

### Technical

#### Materials

- » 100% high-twist nylon polyamide 6 surface
- » 100% nitrile rubber backing

#### Applications

- » Entrances
- » Receptions
- » Corridors
- » Elevators

#### Certifications

- » EN 13501-1 / Cfl-s1
- » EN 14041 Antistatic
- » NFSI High-Traction

#### Absorption:

- » Dirt absorption: 1000 g/m<sup>2</sup>
- » Moisture absorption: 4-5 l/m<sup>2</sup>

### Specification

#### Height

- » Approx. 13-14 mm

#### Weight

- » 2.54 kg/m<sup>2</sup>

#### Standard Sizes

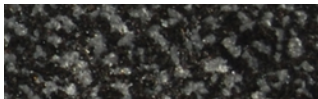
- » 60 x 85 cm
- » 85 x 120 cm
- » 85 x 150 cm
- » 85 x 300 cm
- » 115 x 175 cm
- » 150 x 240 cm

#### Widths

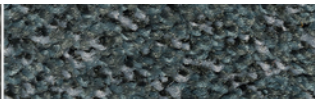
- » 85 cm
- » 115 cm
- » 150 cm

#### Lengths

- » Up to 700 cm



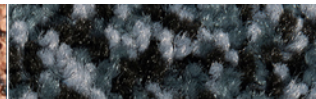
Ebony



Silver Birch



Teak



Willow

